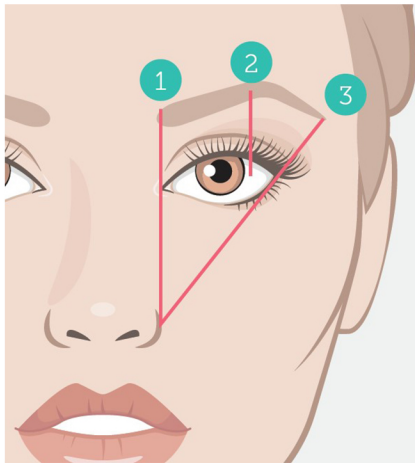


The Positioning of the Ideal Brow



1. The medial origin of the eyebrow should be in the same vertical line as the alar.
2. The peak of the arch should be at a line above the lateral limbus of the cornea (2-3mm away from the outer edge of the iris).
3. The lateral part of the eyebrow should end at an oblique line connecting with the alar and the lateral canthus. The height of the medial and lateral brow should lie at the same level.^{1,2}

Aesthetics
MONTHLY JOURNAL FOR MEDICAL AESTHETIC PROFESSIONALS

Full article

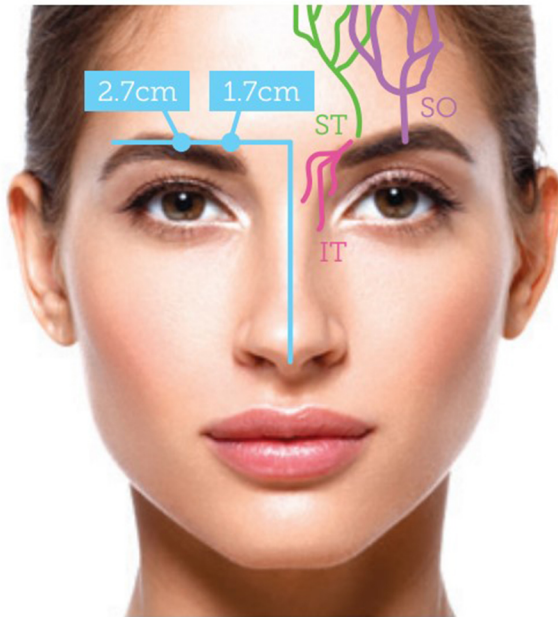
Woodward C and Manning V, *Aesthetics journal*, Treating the Brow, August 2017

<<https://aestheticsjournal.com/feature/treating-the-brow-1>>

References

1. Esin Yalcinkaya, Cemal Cingi, Hakan Soken et al., 'Aesthetic analysis of the ideal eyebrow shape and position,' *Eur Arch Otorhinolaryngol*, 2014, <https://www.researchgate.net/publication/267742996_Aesthetic_analysis_of_the_ideal_eyebrow_shape_and_position>
2. Romm S, 'Art, love, and facial beauty', *Clin Plast Surg*, 1987, 14(4):579-583

Vessels in the Brow



The supratrochlear nerve and artery lie 1.5-1.7cm from the midline, and the supraorbital nerve and artery lie 1cm lateral to the supratrochlear nerve. The vessels and nerves lie in the medial aspect of the brow so caution is required whenever treating this area so as not to damage these structures and cause excessive bruising.¹

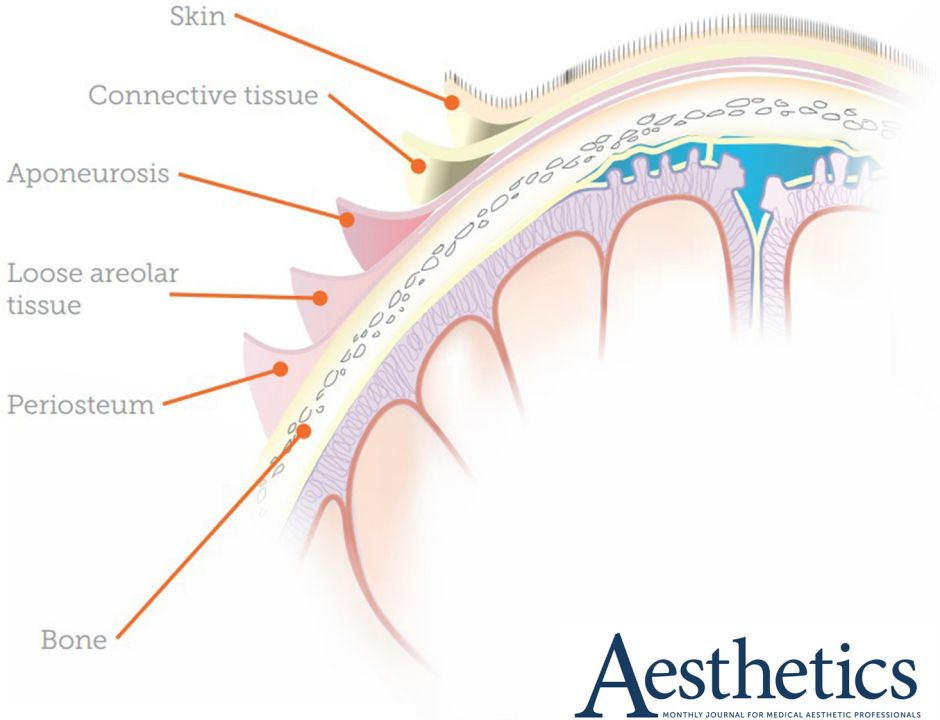
Full article

Woodward C and Manning V, *Aesthetics journal*, Treating the Brow, August 2017
<<https://aestheticsjournal.com/feature/treating-the-brow-1>>

References

1. Weinberger MS, Becker DG, Toriumi DM, 'Sensory nerves of forehead', published by Cummings C, Fredrickson J, Harker L, Krause C, Richardson M, Schuller D, eds, *Otolaryngology Head and Neck Surgery*, 3rd ed. (1998)

The Five Layers of the Scalp

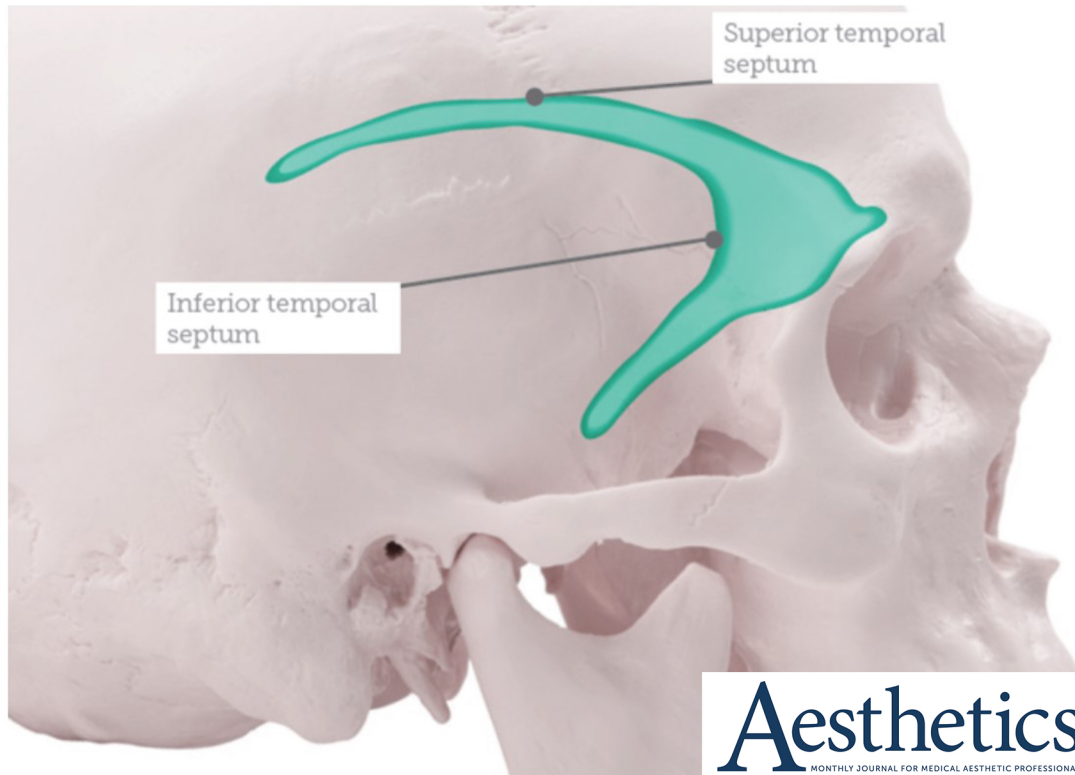


Aesthetics
MONTHLY JOURNAL FOR MEDICAL AESTHETIC PROFESSIONALS

Full article

Woodward C and Manning V, *Aesthetics journal*, Treating the Brow, August 2017
<<https://aestheticsjournal.com/feature/treating-the-brow-1>>

Principle Retaining Ligament Defining the Forehead and Temporal Boundary



Full article

Baker A and Humzah D, *Aesthetics journal*, Forehead Rejuvenation and Contouring Strategies, April 2016
<<https://aestheticsjournal.com/cpd/module/forehead-rejuvenation-and-contouring-strategies>>